

## English Version Microsoft Updates For Windows 7 Professional Retail Box Activation Online

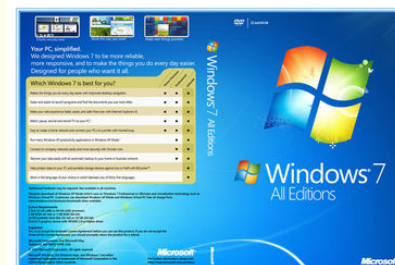
### Basic Information

- Place of Origin: Singapore / others
- Brand Name: Microsoft
- Certification: Microsoft Certified
- Model Number: Windows 7 pro retail
- Minimum Order Quantity: 5 pieces
- Price: Negotiable
- Packaging Details: Retail box
- Delivery Time: In 48 hours after payment confirmed
- Payment Terms: T/T, Western Union, MoneyGram,
- Supply Ability: 20000 pieces / week



### Product Specification

- Language: English/French
- Color: Blue Box
- Free Upgrade: Possible
- Version: Retail/OEM
- Quality: Good
- Activation: Online
- Highlight: **upgrade windows 7 professional, windows 7 retail license**



## Product Description

### English Version Windows 7 Softwares Professional Retailbox Activation Online

#### Processor limits

Windows 7 Professional and up support up to 2 physical processors (CPU sockets), whereas Windows 7 Starter, Home Basic, and Home Premium editions support only 1. Physical processors with either multiple cores, or hyper-threading, or both, implement more than one logical processor per physical processor. The x86 editions of Windows 7 support up to 32 logical processors; x64 editions support up to 256 (4 x 64).

In January 2016, Microsoft announced that it would no longer support Windows platforms older than Windows 10 on devices with Intel "Skylake" processors effective July 17, 2017, and any new Intel-compatible microarchitectures (including Intel's Kaby Lake and AMD's Bristol Ridge) effective immediately upon their release. After July 17, 2017, devices running Windows 7 on Skylake CPUs were to only receive the "most critical" updates for Windows 7, and only if they have been judged not to affect the reliability of Windows 7 on older hardware. Microsoft stated that due to the age of the platform, it would be "challenging" for these newer hardware, firmware, and device driver combinations to properly run under Windows 7, especially for system-on-chip systems. This will not affect the support status of other systems, which will continue to receive security updates until the end of extended support. For enterprise customers, Microsoft issued a list of Skylake-based devices "certified" for Windows 7 and 8.1 in addition to Windows 10, to assist them in migrating to newer hardware that can eventually be upgraded to 10 once they are ready to transition. Microsoft and their hardware partners will provide special testing and support for these devices on 7 and 8.1 until the July 2017 end of support.

On March 18, 2016, in response to criticism over the move, primarily from enterprise customers, Microsoft announced revisions to the support policy, changing the cutoff for support and non-critical updates to July 17, 2018 and stating that Skylake users would receive all critical security updates for Windows 7 and 8.1 through the end of extended support suite.

#### Editions:

Windows 7 is available in six different editions, of which the Home Premium, Professional, and Ultimate were available at retail in most countries, and as pre-loaded software on new computers. Home Premium and Professional were aimed at home users and small businesses respectively, while Ultimate was aimed at enthusiasts. Each edition of Windows 7 includes all of the capabilities and features of the edition below it, and adds additional features oriented towards their market segments; for example, Professional adds additional networking and security features such as Encrypting File System and the ability to join a domain. Ultimate contained a superset of the features from Home Premium and Professional, along with other advanced features oriented towards power users, such as BitLocker drive encryption; unlike Windows Vista, there were no "Ultimate Extras" add-ons created for Windows 7 Ultimate. Retail copies were available in "upgrade" and higher-cost "full" version licenses; "upgrade" licenses require an existing version of Windows to install, while "full" licenses can be installed on computers with no existing operating system.

The remaining three editions were not available at retail, of which two were available exclusively through OEM channels as pre-loaded software. The Starter edition is a stripped-down version of Windows 7 meant for low-cost devices such as netbooks. In comparison to Home Premium, Starter has reduced multimedia functionality, does not allow users to change their desktop wallpaper or theme, disables the "Aero Glass" theme, does not have support for multiple monitors, and can only address 2GB of RAM. Home Basic was sold only in emerging markets, and was positioned in between Home Premium and Starter. The highest edition, Enterprise, is functionally similar to Ultimate, but is only sold through volume licensing via Microsoft's Software Assurance program.

All editions aside from Starter support both IA-32 and x86-64 architectures; Starter only supports 32-bit systems. Retail copies of Windows 7 are distributed on two DVDs: one for the IA-32 version and the other for x86-64. OEM copies include one DVD, depending on the processor architecture licensed. The installation media for consumer versions of Windows 7 are identical; the product key and corresponding license determines the edition that is installed. The Windows Anytime Upgrade service can be used to purchase an upgrade that unlocks the functionality of a higher edition, such as going from Starter to Home Premium, and Home Premium to Ultimate. Most copies of Windows 7 only contained one license; in certain markets, a "Family Pack" version of Windows 7 Home Premium was also released for a limited time, which allowed upgrades on up to three computers. In certain regions, copies of Windows 7 were only sold in, and could only be activated in a designated region.

#### Minimum hardware requirements for Windows 7

Component	Operating system architecture	
	32-bit	64-bit
<b>Processor</b>	1 GHz IA-32 processor	1 GHz x86-64 processor
<b>Memory (RAM)</b>	1 GB	2 GB
<b>Graphics card</b>	DirectX 9 graphics processor with WDDM driver model 1.0	
<b>Free hard drive space</b>	16 GB	20 GB
<b>Optical drive</b>	DVD-ROM drive <sup>[99]</sup> (Only to install from DVD-ROM media)	

Windows XP Mode (Professional, Ultimate and Enterprise): Requires an additional 1 GB of RAM and additional 15 GB of available hard disk space. The requirement for a processor capable of hardware virtualization has been lifted.

Windows Media Center (included in Home Premium, Professional, Ultimate and Enterprise), requires a TV tuner to receive and record TV.

